

Latches, catches and bolts

Ives has multiple roller latches and catches that assure a door will stay closed when not in use. These accessories will not keep a door secure and are not meant for security applications; they only help keep a door closed. Ives also offers a variety of surface bolts and door guards to provide an additional security level.



Introduction

Table of contents

Hinges and pivots

Pulls, push bars and plates

Flush bolts, strikes and coordinators

Latches, catches and bolts

Door stops, holders and silencers

Exterior hardware

Miscellaneous hardware

Latches, catches and bolts

Surface bolts

SB360

Surface bolt

- Surface bolt has 1 1/4" throw for maximum security
- Jimmy-resistant design, bolt locks automatically when thrown, can be released only by pressing knob toward door while retracting
- Ideal for all types of doors
- Available in 12" length
- Unit locks in both the up and down position
- Accepts padlock (not furnished) with maximum 3/8" diameter shackle, minimum 1 3/4" shackle opening height
- Units packed with one-way wood screws for added security
 - Standard wood screws also supplied
- Units packed with a universal top strike (US)

Specifications

Material substrate Heavy duty steel

Certifications

- Meets ANSI/BHMA A156.16
- Florida Building Commission listed
- UL10C Listed (3 hour) fire doors up to 10'0"
- FEMA 361 and 320 listed
- Miami Dade County NOA listed

Dimensions

Bar	Overall width	Overall projection	Top strike	Available mortise strike
3/4" W x 3/4" T	2 1/32"	2 1/16"	1 1/2" W x 1 1/2" L x 3/16" T	1 5/8" W x 3 1/2" L x 1/8" T

Finishes

BHMA	Description	Substrate	Finish
604	Clear Zinc	Steel	US2C

Available accessories

- Through bolt
- Mortise bottom strike (MS)

SB453

Surface bolt

- Surface bolt has 1 3/16" throw for maximum security
- Strong tension springs prevent creep
- Ideal for all types of doors
- Available 8" and 12" lengths
- Units packed with standard wood screws and machine screws to meet most field conditions
- Units packed with both a universal top strike (US) and a mortise bottom strike (MS)

Specifications

Material substrate Heavy duty steel

Certifications

- Meets ANSI/BHMA A156.16 L84161
- UL10C Listed (3 hour) fire doors up to 10'0"

Dimensions

Bar	Overall width	Overall projection	Top strike	Bottom strike
3/4" W x 3/4" T	2 1/32"	1 5/16"	1 1/2" W x 1 1/2" L x 3/16" T	1 5/8" W x 3 1/2" L x 1/8" T

Finishes

BHMA	Description	Substrate	Finish
604	Clear Zinc	Steel	US2C
632*	Bright Brass	Steel	US3
633*	Satin Brass	Steel	US4
639	Satin Bronze	Steel	US10
640	Oil Rubbed Bronze	Steel	US10B
643e/716	Aged Bronze	Steel	643e/716
646	Satin Nickel	Steel	US15
652	Satin Chrome	Steel	US26D
631	Matte Black	Steel	BLK

* Only available in 8" bolt length. For other colors, consult factory.

Available accessories

- Through bolt
- Through bolts (machine screws with cap nuts) not intended for use as security screws



Available mortise strike



Latches, catches and bolts

Surface bolts

SB1630 / SB1640

Surface bolt

- Standard surface bolt has 1" throw for maximum security
- Ideal for all types of doors
- Fully concealed mounting prevents vandalism
- Units packed with wood and machine screws to meet most field conditions
- Comes end plug and end plug stud package
- Available in locking version, unit locks in both the up and down position
 - Locking bolts are furnished with 2 keys in 4 keying variations

Specifications

Material	▪ 1630 Series is constructed of heavy duty steel substrate
	▪ 1640 Series is constructed of brass
Certifications	▪ 1630 Meets ANSI/BHMA A156.16 L84161 and UL10C Listed (3 hour) fire doors up to 8'0"
	▪ 1640 Meets ANSI/BHMA A156.16 L24161

Dimensions

Body	Overall knob or lock housing projection	Top strike	Bottom strike
8" L x 7/8" W x 3/4" T	1 1/2"	1 1/4" W x 7/8" L x 15/16" D	3" L x 1" W x 1/8" T

Key code

Strike options

- **T** Top strike only
 - **B** Bottom strike only
 - **TB** Top and bottom strike*
 - **TL** Locking bolt with top strike only
 - **BL** Locking bolt with bottom strike only
 - **TBL** Locking bolt with top and bottom strike*
- 1289 Standard key code
 - 1360
 - 1390
 - 1395

* Available on SB1630 Only

SB1630 Finishes

BHMA	Description	Substrate	Finish
603	Clear Zinc	Steel	US2G
640	Oil Rubbed Bronze	Steel	US10B
652	Satin Chrome	Steel	US26D

SB1640 Finishes

BHMA	Description	Substrate	Finish
605	Bright Brass	Brass	US3
613	Oil Rubbed Bronze	Brass	US10B
626	Satin Chrome	Brass	US26D

For other colors, consult factory.

Available accessories

- Security pin screw
- Through bolts available
- End plug and end plug stud package
- Cylinder package
- Replacement strike packages



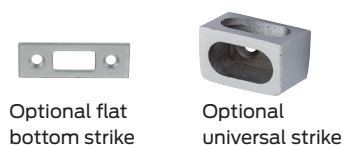
Latches, catches and bolts

Surface bolts

SB1600M1 / SB1600M2

Surface bolt

- Standard surface bolt has 3 1/2" throw for maximum security and for doors with larger undercuts
- Sleek handle design
- Ideal for all types of doors
- Fully concealed mounting prevents vandalism
- Available in locking version. Unit locks in both the up and down position
 - Locking bolts are furnished with 2 keys in 4 keying variations
- Units packed with wood and machine screws to meet most field conditions
- M1 version has Actuator tab pointing away from the door
- M2 version has Actuator tab pointing towards the door



Specifications

Material substrate	Constructed of heavy duty steel
Certifications	Meets ANSI/BHMA A156.16 L84161 and UL10C Listed (3 hour) fire doors up to 8'0"

Dimensions

Bar	Top strike	Bottom strike
11" L x 3/4" W x 3/4" T, locking version 1 1/2" thick	1 1/4" W x 7/8" T x 15/16" D	3" L x 1" W x 1/8" T

Strike options

- T** Top strike only
- B** Bottom strike only
- TL** Top locking strike only
- BL** Bottom locking strike only

Key code

- 1289 Standard key code
- 1360
- 1390
- 1395

Finishes

BHMA	Description	Substrate	Finish
689	Aluminum Painted	Steel	SP28
691	Dull Bronze Painted	Steel	SP10
695	Dark Bronze Painted	Steel	SP313
706	Dull Brass Painted	Steel	SP4
631	Matte Black	Steel	BLK

For other colors, consult factory.

Available accessories

- Security pin screw
- Through bolts available
- End plug and end plug stud package
- Cylinder package
- Replacement strike packages

Latches, catches and bolts

Surface bolts

40

Surface bolt, decorative light duty

- Recommended for 1 3/8" and 1 3/4" hollow core doors or door partitions
- Concealed screw design enhances appearance and security
- Exceptional strength and durability provided by interlocking construction of heavy gauge track and rod
- Permanent stop prevents rod disengagement from track
- Tension spring holds bolt in desired position
- Track assures smooth operation and interlocks with side edges of rod to eliminate marring
- Decorative 5/8" diameter knob designed to facilitate bolt operation
- Available in 3", 4" and 6" lengths
- Units packed with wood screws
- Packed with both universal and mortise strikes

Specifications

Material substrate	Made from extruded brass
Certifications	Meets ANSI/BHMA A156.16

Dimensions

Throw	Projection	Width	Length
1 1/16"	3/4"	1 1/16"	3", 4" or 6"

Finishes

BHMA	Description	Substrate	Finish
605	Bright Brass	Brass	B3
609	Blackened Brass	Brass	B5
613	Oil Rubbed Bronze	Brass	B10B
619	Satin Nickel	Brass	B15
625	Bright Chrome	Brass	B26
626	Satin Chrome	Brass	B26D
643e/716	Aged Bronze	Brass	643e/716
622	Matte Black	Brass	BLK

For other colors, consult factory.



Universal strike



Mortise strike

253

Surface bolt, decorative heavy duty

- Recommended for 1 3/4" or larger doors
- Heavy duty, decorative bolt ideal where extra strength required
- Decorative 1 1/4" diameter knob fits well with any décor and designed to facilitate bolt operation
- Available in 8" and 12" lengths. Optional lengths available, consult factory.
- Units packed with wood screws
- Packed universal strike (US) and mortise strike (MS)

Specifications

Material substrate	Made from solid brass
Certifications	Meets ANSI/BHMA A156.16

Dimensions

Throw	Projection	Half round rod	Overall width	Length
1 1/8"	1 5/16"	5/8"	1 5/8"	8" or 12"

Finishes

BHMA	Description	Substrate	Finish
605	Bright Brass	Brass	B3
613	Oil Rubbed Bronze	Brass	B10B
626	Satin Chrome	Brass	B26D

For other colors, consult factory.



Universal strike



Mortise strike

Latches, catches and bolts

Dutch door and mortise door bolts

054

Dutch door bolt

- Practical, rugged, attractive bolt for application on dutch doors as well as other areas
- Chamfered rod end draws the two leaves of door tightly together
- Sufficient tolerance provided in strike opening to allow for misalignment of door leaves and also prevents binding of bolt
- Decorative 1" diameter knob designed to facilitate bolt operation
- Units packed with wood screws
- Packed with Standard Strike (SS), Mortise Strike (MS) and Universal Strike (US)

Specifications

Material substrate	Made from solid brass
Certifications	Meets ANSI/BHMA A156.16

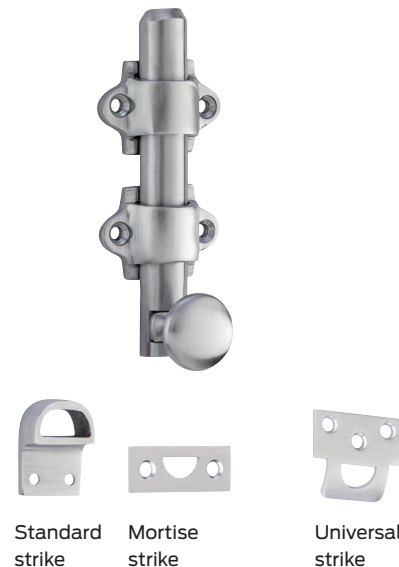
Dimensions

Throw	Projection	Half round rod	Overall width	Rod length	Overall length
5/8"	1 1/8"	5/8"	1 5/8"	4 1/4"	Specify 4 3/8" (including knob)

Finishes

BHMA	Description	Substrate	Finish
605	Bright Brass	Brass	B3
606	Satin Brass	Brass	B4
612	Satin Bronze	Brass	B10
613	Oil Rubbed Bronze	Brass	B10B
619	Satin Nickel	Brass	B15
625	Bright Chrome	Brass	B26
626	Satin Chrome	Brass	B26D

For other colors, consult factory.



Standard strike

Mortise strike

Universal strike

S48

Mortise door bolt

- Brass oval turn knob and escutcheon
- Steel bolt for extra strength
- Rack is milled for precision fit with pinion
- Units packed with wood screws

Specifications

Material substrate	Made from brass and steel
Certifications	Meets ANSI/BHMA A156.16

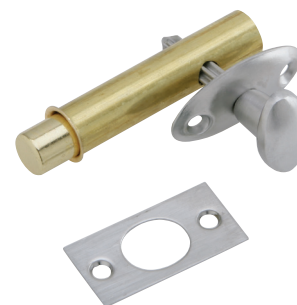
Dimensions

Throw	Projection	Half round rod	Overall width	Rod length
1 3/4"	1/2"	1/2"	2 1/2" L x 9/16" D	1 3/4" H x 7/8" W

Finishes

BHMA	Description	Substrate	Finish
605	Bright Brass	Brass	B3
609	Blackened Brass	Brass	B5
613	Oil Rubbed Bronze	Brass	B10B
619	Satin Nickel	Brass	B15
625	Bright Chrome	Brass	B26
626	Satin Chrome	Brass	B26D

For other colors, consult factory.



Latches, catches and bolts

Door guards

481

Chain door guard

- Permits the door to be slightly opened to allow viewing
- Narrow chain holder maintains chain in stationary position when door guard is not in use, eliminating marring of door and frame caused by dangling chain
- Welded twist link steel chain finished to match door plate and chain holder
- Packed with sheet metal screws



Specifications

Material substrate	Made from wrought brass or burnished wrought steel
Certifications	Meets ANSI/BHMA A156.16

Dimensions

Door plate	Chain holder	Chain length
3 3/8" L x 1 3/8" W	2" H x 3/4" W	6 1/4"

Finishes - brass and steel

BHMA	Description	Substrate	Finish
605	Bright Brass	Brass	B3
626	Satin Chrome	Brass	B26D
632	Bright Brass	Steel	F3
633	Satin Brass	Steel	F4
638	Blackened Brass	Steel	F5
639	Satin Bronze	Steel	F10
643e/716	Aged Bronze	Steel	F-643e/716
646	Satin Nickel	Steel	F15
651	Bright Chrome	Steel	F26
652	Satin Chrome	Steel	F26D
631	Matte Black	Steel	F-BLK

For other colors, consult factory.

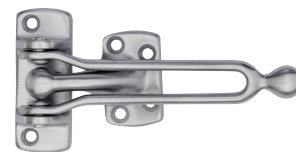
Latches, catches and bolts

Door guards

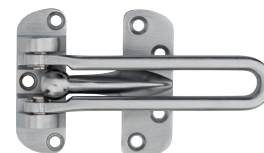
482

Solid bar door guard

- For use on doors that are flush with frames
- The solid bar, interlocking with the ball on the strike plate, permits the door to be slightly opened to allow viewing
- The hinged bar allows the door guard to be positioned 180° away from the door when not in use
- Edge protection plate, furnished with cast brass door guards only, minimizes the chance for marring the door or frame. Can be purchased as a separate item for Aluminum substrate
- Strike plate is designed to prevent the solid bar from marring the inside of the door when in use
- Packed with sheet metal screws



Cast brass



Cast zinc

Specifications

Material substrate	Made from cast brass or cast zinc
Certifications	Meets ANSI/BHMA A156.16

Dimensions - cast brass

Strike plate	Holder	Arm length	Edge guard
2 5/8" H x 1 1/32" W	1 3/4" H x 1 1/16" W	4 3/4"	1 1/8" H x 1 1/32" W

Dimensions - zinc

Strike plate	Holder	Arm length
2 1/2" H x 7/8" W	2 1/2" H x 15/16" W	3 13/16"

Finishes - brass

BHMA	Description	Substrate	Finish
605	Bright Brass	Brass	B3
606	Satin Brass	Brass	B4
612	Satin Bronze	Brass	B10
613	Oil Rubbed Bronze	Brass	B10B
619	Satin Nickel	Brass	B15
625	Bright Chrome	Brass	B26
626	Satin Chrome	Brass	B26D
643e/716	Aged Bronze	Brass	B-643e/716
622	Matte Black	Brass	B-BLK

Finishes - zinc

BHMA	Description	Substrate	Finish
677	Bright Brass	Zinc	Z605E
-	Blackened Brass	Zinc	Z609E
681	Bright Chrome	Zinc	Z625E
682	Satin Chrome	Zinc	Z626E

For other colors, consult factory.

Latches, catches and bolts

Roller latches

RL30 / RL30A

Roller latch

- Recommended for higher traffic applications
- Actuation is simple, closing of the door causes the roller to fall in the depression of the strike, thereby holding the door closed
- The projection of the roller is easily adjusted using adjusting screws on the face of the unit
- Maximum projection of the roller is $\frac{3}{8}$ " allowing for variance in the door clearance
- Nylon roller standard
- Units packed with wood and machine screws to meet most field conditions
- RL30A model packed with ASA strike

Specifications

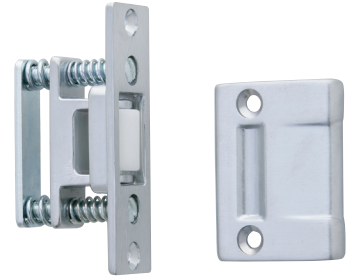
Material substrate	Made from forged brass
Certifications	Meets ANSI/BHMA A156.16, E19091

Dimensions

Body	Strike	Optional ASA strike
$1\frac{1}{8}$ " W x $2\frac{1}{4}$ " H x $2\frac{1}{4}$ " D	$1\frac{1}{8}$ " W x $2\frac{3}{4}$ " H x $\frac{3}{32}$ " T, lip to center - $1\frac{1}{4}$ "	$1\frac{1}{4}$ " W x $4\frac{7}{8}$ " H x $\frac{3}{32}$ " T, lip to center - $1\frac{1}{4}$ "

Available accessories

- Strike - ASA
- Security mounting screws
- Silencers



RL32 / RL32A

Roller latch

- Recommended light duty cabinet and closet applications
- Actuation is simple, closing of the door causes the roller to fall in the depression of the strike, thereby holding the door closed
- The projection of the roller is easily adjusted by turning knurled knob on back of latch
- Maximum projection of the roller is $\frac{1}{2}$ " allowing for variance in the door clearance
- Fits heavy-duty cylindrical lock cutout
- Nylon roller standard
- Non-handed
- Units packed with wood screws
- RL32A model packed with ASA strike

Specifications

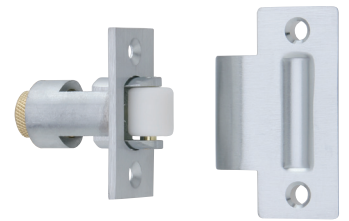
Material substrate	Made from brass
Certifications	Meets ANSI/BHMA A156.16, E19091

Dimensions

Body	Strike	Optional ASA strike
$1\frac{1}{8}$ " W x $2\frac{1}{4}$ " H x $2\frac{1}{4}$ " D	$1\frac{1}{8}$ " W x $2\frac{3}{4}$ " H x $\frac{3}{32}$ " T, lip to center - $1\frac{1}{4}$ "	$1\frac{1}{4}$ " W x $4\frac{7}{8}$ " H x $\frac{3}{32}$ " T, lip to center - $1\frac{1}{4}$ "

Available accessories

- Strike - ASA



RL30/30A and RL32/32A Finishes

BHMA	Description	Substrate	Finish
605	Bright Brass	Brass	US3
606	Satin Brass	Brass	US4
612	Satin Bronze	Brass	US10
613	Oil Rubbed Bronze	Brass	US10B
619	Satin Nickel	Brass	US15
625	Bright Chrome	Brass	US26
626	Satin Chrome	Brass	US26D
643e/716	Aged Bronze	Brass	643e/716
622	Matte Black	Brass	BLK

For other colors, consult factory.

Latches, catches and bolts

Roller latches

RL36 / RL36A

Roller latch

- Recommended light duty cabinet and closet applications
- Actuation is simple, closing of the door causes the roller to fall in the depression of the strike, thereby holding the door closed
- The projection of the roller is easily adjusted by turning slotted screw on back of latch
- Maximum projection of the roller is $\frac{5}{16}$ " allowing for variance in the door clearance
- Fits cylindrical lock cutout
- Nylon roller
- Non-handed
- Units packed with wood screws
- RL36A model packed with ASA strike



Specifications

Material substrate	Made from stainless steel
Certifications	Meets ANSI/BHMA A156.16, E57082

Dimensions

Body	Strike	Optional ASA strike
1" W x 2 1/4" H x 2" D	1 1/8" W x 2 3/4" H x 3/32" T, lip to center - 1 1/4"	1 1/4" W x 4 7/8" H x 3/32" T, lip to center - 1 1/4"

Finishes

BHMA	Description	Substrate	Finish
630	Satin Stainless	Stainless steel	US32D

For other colors, consult factory.

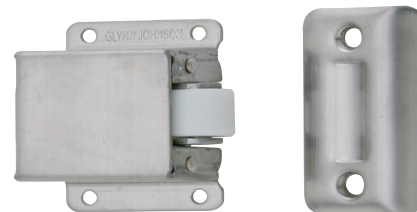
Available accessories

- Strike - ASA

RL38

Roller latch

- Rim style roller latch
- Actuation is simple, closing of the door causes the roller to fall in the depression of the strike, thereby holding the door closed
- The projection of the roller is easily adjusted by turning slotted screw
- Maximum projection of the roller is $\frac{3}{8}$ " allowing for variance in the door clearance
- Nylon roller
- Non-handed
- Units packed with wood screws



Specifications

Material substrate	Made from stainless steel
Certifications	Meets ANSI/BHMA A156.16, L27092

Dimensions

Body	Strike
1 3/8" W x 2" H x 7/8" D	1" W x 2 1/8" H x 3/8" D

Finishes

BHMA	Description	Substrate	Finish
630	Satin Stainless	Stainless steel	US32D

For other colors, consult factory.

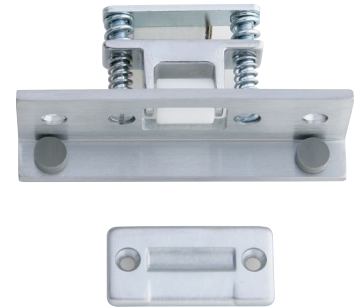
Latches, catches and bolts

Roller latches

RL1152

Roller latch

- Recommended for higher traffic applications
- Combination of RL30 roller latch and angle stop
- Actuation is simple, closing of the door causes the roller to fall in the depression of the strike, thereby holding the door closed
- The projection of the roller is easily adjustable using adjusting screws on the face of the unit
- Maximum projection of the roller is $\frac{3}{8}$ " allowing for variance in the door clearance
- Nylon roller standard
- Forged brass construction
- Units packed with wood screws



Specifications

Material substrate	Made from forged brass
Certifications	Meets ANSI/BHMA A156.16, E19111

Dimensions

Body	Strike
1 $\frac{3}{8}$ " W x 2" H x $\frac{7}{8}$ " D	1" W x 2 $\frac{1}{8}$ " H x $\frac{3}{8}$ " D

Finishes

BHMA	Description	Substrate	Finish
605	Bright Brass	Brass	US3
606	Satin Brass	Brass	US4
612	Satin Bronze	Brass	US10
613	Oil Rubbed Bronze	Brass	US10B
619	Satin Nickel	Brass	US15
625	Bright Chrome	Brass	US26
626	Satin Chrome	Brass	US26D
643e/716	Aged Bronze	Brass	643e/716
622	Matte Black	Brass	BLK

For other colors, consult factory.

Available accessories

- Security mounting screws
- Brass roller
- Silencers

STK685 / STK685L

Optional strikes

STK685 strike

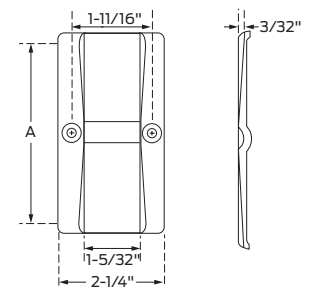
- Dimple of strike centered on strike

STK685L strike

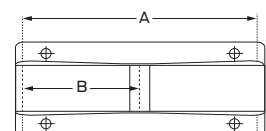
- Location of strike dimple is variable
- Please specify location of dimple from edge of frame to centerline of the dimple - B
Dimple will be located B + $\frac{3}{16}$ " to accommodate lip

Both strikes:

- Custom make strike for doors that swing both directions
- For use with roller latches
- Specify frame depth - A. Overall strike length will be A + $\frac{3}{8}$ " to accommodate $\frac{3}{16}$ " lip on each side
- Units packed with wood and machine screws to meet most field conditions



STK685



STK685L

Specifications

Material substrate	Made from $\frac{3}{32}$ " brass
--------------------	----------------------------------

Dimensions

Strike width	Strike length
2 $\frac{1}{4}$ "	Specified frame width + $\frac{3}{8}$ "

Finishes

BHMA	Description	Substrate	Finish
605	Bright Brass	Brass	US3
606	Satin Brass	Brass	US4
612	Satin Bronze	Brass	US10
613	Oil Rubbed Bronze	Brass	US10B
625	Bright Chrome	Brass	US26
626	Satin Chrome	Brass	US26D

For other colors, consult factory.

Latches, catches and bolts

Angle stops

AS895

Angle stop

- Surface applied stop for single doors
- Large rubber bumper to ensure quiet operation
- Units packed with wood and machine screws to meet most field conditions

Specifications

Material substrate Made from 1/8" brass

Dimensions

1 1/2" wide x 1" angle x 2 1/2" long

Available accessories

- Security pin screws

Finishes

BHMA	Description	Substrate	Finish
605	Bright Brass	Brass	US3
606	Satin Brass	Brass	US4
612	Satin Bronze	Brass	US10
613	Oil Rubbed Bronze	Brass	US10B
625	Bright Chrome	Brass	US26
626	Satin Chrome	Brass	US26D

For other colors, consult factory.



AS18

Angle stop

- Surface applied stop for single and double doors
- Includes SR64 door silencers to ensure quiet operation
- SR64 silencers are replaceable
- Units packed with wood and machine screws to meet most field conditions

Specifications

Material substrate Made from 3/16" brass

Dimensions

1 1/2" wide x 3/4" angle x 3 1/2" long

Available accessories

- Security pin screws

Finishes

BHMA	Description	Substrate	Finish
605	Bright Brass	Brass	US3
606	Satin Brass	Brass	US4
612	Satin Bronze	Brass	US10
613	Oil Rubbed Bronze	Brass	US10B
625	Bright Chrome	Brass	US26
626	Satin Chrome	Brass	US26D

For other colors, consult factory.



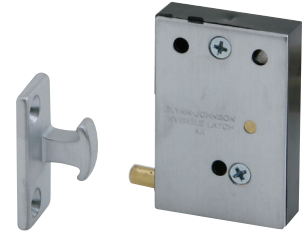
Latches, catches and bolts

Invisible latches

CL11

Invisible latch

- Invisible latch is ideal for installations where no visible latch or strike is desired
- Unit can be installed at the top, bottom or side of the door
- Can be mortised into the stop or surface mounted to the stop
- Recommended for use on small panels, cabinet doors or light weight closet doors
- Operation is simple, latching is accomplished by a slight push
- To unlatch the door, a harder push releases the door and pushes the door out
- Brass and plastic construction
- Applies 13 pounds to open the door
- Units packed with wood screws



Specifications

Material substrate	Made from brass and plastic
Certifications	Meets ANSI/BHMA A156.9, B03272

Dimensions

Body	Strike
1 1/4" W x 1 7/8" H x 7/16" T	9/16" W x 1 5/16" H x 9/16" Projection

Available accessories

- Security pin screws

CL12

Invisible latch

- Invisible latch is ideal for installations where no visible latch is desired
- Unit can be installed at the top, bottom or side of the door
- Can be mortised into the stop or surface mounted to the stop
- Recommended for use on larger panels or regular size doors
- Operation is simple, latching is accomplished by a slight push
- To unlatch the door, a harder push releases the door and pushes the door out
- Brass and plastic construction
- Applies 27 pounds to open the door
- Units packed with wood screws



Specifications

Material substrate	Made from brass and plastic
Certifications	Meets ANSI/BHMA A156.9, B03272

Dimensions

Body	Strike
1 1/4" W x 2 1/4" H x 9/16" T	5/8" W x 1 13/16" H x 9/16" Projection

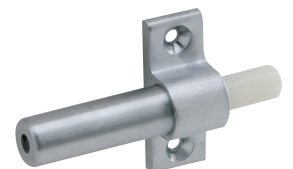
Available accessories

- Security pin screws

CL14

Invisible latch, auxiliary pusher

- Aid in the operation of the CL11 and CL12 where hinges or surrounding conditions prevent smooth operation of doors
- Provides 1 1/16" throw
- Nylon pusher
- Applies 10 pounds to open the door
- Units packed with wood screws



Specifications

Material substrate	Made from brass
Certifications	Meets ANSI/BHMA A156.9, B13282

Dimensions

Body
2 15/16" L x 1 11/16" W x 5/8" D

Available accessories

- Security pin screws

C11, C12 and C14 Finishes

BHMA	Description	Substrate	Finish
605	Bright Brass	Brass	US3
606	Satin Brass	Brass	US4
612	Satin Bronze	Brass	US10
626	Satin Chrome	Brass	US26D

For other colors, consult factory.

Latches, catches and bolts

Magnetic catches

325

Magnetic catch

- Double pole
- Self aligning magnet ensures maximum pull
- Case design allows easy magnet adjustment on cabinet or small door applications
- Packed with sheet metal screws
- 5 lbs. load capacity

Specifications

Material substrate	Case made from aluminum
Certifications	Meets ANSI/BHMA A156.9, B43171

Dimensions

Case
1 1/8" W x 2 1/16" L x 5/8" T

Finishes

BHMA	Description	Substrate	Finish
666	Bright Brass	Aluminum	A3
673	Aluminum Clear Coat	Aluminum	A92

For other colors, consult factory.



326

Magnetic catch, dual double pole

- Dual double pole
- Self-aligning magnets ensure maximum pull
- Can be surface mounted or mortised
- Packed with sheet metal screws, 2 short strikes and 1 long strike
- 9 lbs. load capacity

Specifications

Material substrate	Case made from aluminum
Certifications	Meets ANSI/BHMA A156.9, B43161

Dimensions

Case
1" W x 3 1/8" L x 9/16" T

Finishes

BHMA	Description	Substrate	Finish
666	Bright Brass	Aluminum	A3
673	Aluminum Clear Coat	Aluminum	A92

For other colors, consult factory.



32

Magnetic catch, dual triple pole

- Dual triple pole
- Self-aligning magnets insure maximum pull
- Can be surface mounted or mortised
- Packed with sheet metal screws, 2 short strikes and 1 long strike
- 14 lbs. load capacity

Specifications

Material substrate	Case made from aluminum
Certifications	Meets ANSI/BHMA A156.9, B43161

Dimensions

Case
1" W x 3 1/8" L x 3/4" T

Finishes

BHMA	Description	Substrate	Finish
666	Bright Brass	Aluminum	A3
673	Aluminum Clear Coat	Aluminum	A92

For other colors, consult factory.



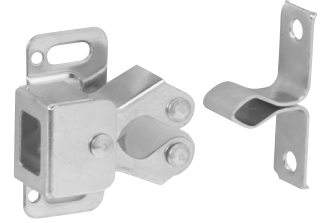
Latches, catches and bolts

Roller catches

330

Roller catch

- Most economical solution recommended for low frequency opening applications
- Independent rollers allow positive action and self-alignment
- Cushioned rollers absorb shock and noise, hold door away from cabinet
- Application allows for easy adjustment
- Packed with screws and brads



Specifications

Material substrate	Case made from aluminum
Certifications	Meets ANSI/BHMA A156.9, B83071

Dimensions

Case	Strike
1 1/4" H x 1 1/16" W	1 1/4" H x 3/8" W

Finishes

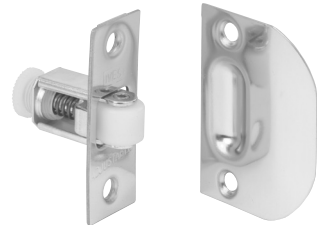
BHMA	Description	Substrate	Finish
604	Clear Zinc	Steel	F2C

For other colors, consult factory.

335

Roller catch

- Recommended for higher frequency opening applications
- Smooth, positive latching action insured by powerful conical spring
- Durable nylon roller insures quiet operation
- Adjustable tension. Adjustments can be varied from 4 to 17 lbs. of holding power making possible a wide range of door performance
- Easily installed on thin doors
- Full lip style strike designed for simplified mortising
- Packed with sheet metal screws



Specifications

Material substrate	Made from wrought brass
Certifications	Meets ANSI/BHMA A156.16, L27081 for brass

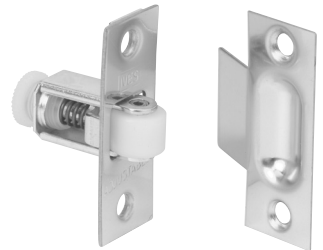
Dimensions

Face plate	Bore	Strike
7/8" W x 2 1/4" H	1 3/4" D x 13/16" DIA	1 5/8" W x 2 1/4" H, lip to center - 1 3/16"

336

Roller catch

- Recommended for higher frequency opening applications
- Smooth, positive latching action insured by powerful conical spring
- Durable nylon roller insures quiet operation
- Adjustable tension; adjustments can be varied from 4 to 17 lbs of holding power making possible a wide range of door performance
- Easily installed on thin doors
- Standard box type strike designed for neat appearance
- Packed with sheet metal screws



Specifications

Material substrate	Made from wrought brass
Certifications	Meets ANSI/BHMA A156.16, L27081 for brass

Dimensions

Face plate	Bore	Strike
7/8" W x 2 1/4" H	1 3/4" D x 13/16" DIA	1 5/8" W x 2 1/4" H, lip to center - 1 3/16"

335 and 336 Finishes

BHMA	Description	Substrate	Finish
605	Bright brass	Brass	B3
606	Satin brass	Brass	B4
609	Blackened brass	Brass	B5
612	Satin bronze	Brass	B10
613	Oil rubbed bronze	Brass	B10B
619	Satin nickel	Brass	B15
625	Bright chrome	Brass	B26
626	Satin chrome	Brass	B26D
643e/716	Aged bronze	Brass	643e/716
622	Matte black	Brass	BLK

For other colors, consult factory.

Latches, catches and bolts

Ball catches

CL21

Ball catch

- Four-way catch with hexagon stud
- Ideal for holding medium duty doors
- The strike slides between two stainless steel balls that are under spring tension; as the strike engages, the door is held tightly shut
- Strike can enter body from any direction
- Spring tension is easily adjusted to suit field conditions
- Body can be surface applied or mortised
- Units packed with wood screws

Specifications

Material substrate	Made from brass
Certifications	Meets ANSI/BHMA A156.9

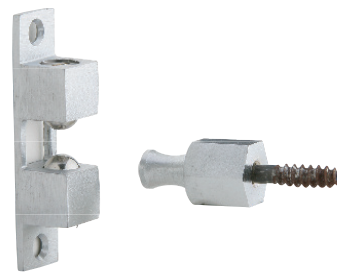
Dimensions

Body	Strike
$\frac{3}{4}$ " W x 3" H x $\frac{3}{4}$ " D	$\frac{3}{4}$ " W hex x 1 $\frac{1}{2}$ " H

Finishes

BHMA	Description	Substrate	Finish
604	Clear Zinc	Steel	F2C

For other colors, consult factory.



Available accessories

- Security pin screws

CL21A

Ball catch

- Four-way catch with plate type strike
- Ideal for closet doors, access doors, hinged openings and numerous other applications
- The strike slides between two stainless steel balls that are under spring tension; As the strike engages, the door is held tightly shut
- Strike can enter body from any direction
- Spring tension is easily adjusted to suit field conditions
- Body can be surface applied or mortised
- Units packed with wood screws

Specifications

Material substrate	Made from brass
Certifications	Meets ANSI/BHMA A156.9, B13292

Dimensions

Body	Strike
$\frac{3}{4}$ " W x 3" H x $\frac{3}{4}$ " D	$\frac{7}{16}$ " W x 1 $\frac{3}{4}$ " H x $\frac{7}{8}$ " D



Available accessories

- Security pin screws

CL22

Ball catch

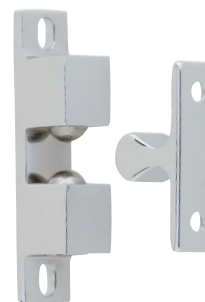
- Three-way catch with plate type strike
- Ideal for smaller cabinet doors or panels
- The strike slides between two stainless steel balls that are under spring tension; as the strike engages, the door is held tightly shut
- Strike can enter body from either side or front
- Spring tension is easily adjusted to suit field conditions
- Body can be surface applied or mortised
- Units packed with wood screws

Specifications

Material substrate	Made from brass
Certifications	Meets ANSI/BHMA A156.9, B13292

Dimensions

Body	Strike
$\frac{3}{4}$ " W x 3" H x $\frac{3}{4}$ " D	$\frac{7}{16}$ " W x 1 $\frac{3}{4}$ " H x $\frac{7}{8}$ " D



Available accessories

- Security pin screws

CL21A and CL22 Finishes

BHMA	Description	Substrate	Finish
605	Bright brass	Brass	US3
606	Satin brass	Brass	US4
612	Satin bronze	Brass	US10
625	Bright chrome	Brass	US26
626	Satin chrome	Brass	US26D

For other colors, consult factory.

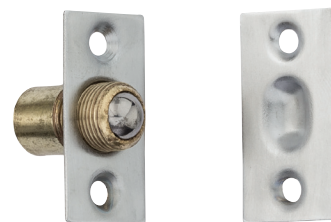
Latches, catches and bolts

Ball catches

345

Ball catch, adjustable

- Recommended for lower frequency opening applications
- Ideal for cabinets and small interior doors
- Free rolling ball insures smooth, positive and trouble-free action
- Adjustable threaded barrel compensates for various door clearances
- Adjustable spring tension
- Units packed with wood screws



Specifications

Material substrate	Made from wrought brass
Certifications	Meets ANSI/BHMA A156.9, B23013

Dimensions

Face plate	Bore	Strike
$\frac{3}{4}$ " W x $1\frac{1}{2}$ " H	1" D x $\frac{9}{16}$ " DIA	$\frac{25}{32}$ " W x $1\frac{1}{2}$ " H, lip to center - $\frac{13}{32}$ "

Finishes

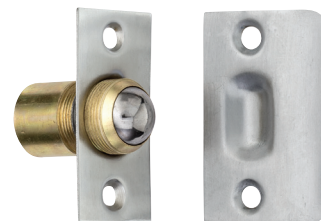
BHMA	Description	Substrate	Finish
605	Bright Brass	Brass	US3
609	Blackened Brass	Brass	US5
612	Satin Bronze	Brass	US10
613	Oil Rubbed Bronze	Brass	US10B
619	Satin Nickel	Brass	US15
625	Bright Chrome	Brass	US26
626	Satin Chrome	Brass	US26D

For other colors, consult factory.

347

Ball catch, dual adjustable - square corners

- Recommended for lower frequency opening applications
- Ideal for cabinets and small interior doors
- Free rolling ball insures smooth, positive and trouble-free action
- Adjustable threaded barrel compensates for various door clearances
- Adjustable spring tension
- Rounded corners on strike lip for safety
- Units packed with wood screws



Specifications

Material substrate	Made from wrought brass
Certifications	Meets ANSI/BHMA A156.9, B23013

Dimensions

Face plate	Bore	Strike
1" W x $2\frac{1}{8}$ " H	$\frac{7}{8}$ " DIA x $1\frac{3}{8}$ " D	$1\frac{3}{8}$ " W x $2\frac{1}{8}$ " H, lip to center - $\frac{7}{8}$ "

Finishes

BHMA	Description	Substrate	Finish
605	Bright Brass	Brass	US3
606	Satin Brass	Brass	US3
609	Blackened Brass	Brass	US5
612	Satin Bronze	Brass	US10
613	Oil Rubbed Bronze	Brass	US10B
619	Satin Nickel	Brass	US15
625	Bright Chrome	Brass	US26
626	Satin Chrome	Brass	US26D
643e/716	Aged Bronze	Brass	643e/716
622	Matte Black	Brass	BLK

For other colors, consult factory.

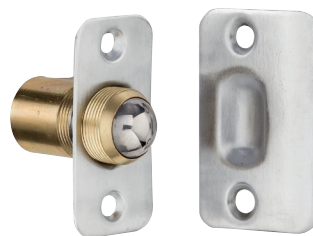
Latches, catches and bolts

Ball catches

349

Ball catch, dual adjustable - rounded corners

- Recommended for lower frequency opening applications
- For catch in door installations
- Radiused corners allow easy installation with a router
- Dual adjustment for door clearance and holding strength
- Lip strike is designed for use where strike is mounted in jamb
- Free rolling ball insures smooth, positive and trouble-free action
- Adjustable threaded barrel compensates for various door clearances
- Adjustable spring tension
- Rounded corners on strike lip for safety
- Units packed with wood screws



Specifications

Material substrate	Made from wrought brass
Certifications	Meets ANSI/BHMA A156.9, B23013

Dimensions

Face plate	Bore	Strike
1" W x 2 1/8" H	7/8" DIA x 1 3/8" D	1 3/8" W x 2 1/8" H, lip to center - 7/8"

Finishes

BHMA	Description	Substrate	Finish
605	Bright Brass	Brass	US3
606	Satin Brass	Brass	US3
609	Blackened Brass	Brass	US5
612	Satin Bronze	Brass	US10
613	Oil Rubbed Bronze	Brass	US10B
619	Satin Nickel	Brass	US15
625	Bright Chrome	Brass	US26
626	Satin Chrome	Brass	US26D
643e/716	Aged Bronze	Brass	643e/716
622	Matte Black	Brass	BLK

For other colors, consult factory.

2

Elbow catch

- Ideal for use on the inactive leaf of a pair of cabinet doors
- Surface applied, making installation simple
- Spring loaded function - surface applied, making installation simple
- Made from cast aluminum

Specifications

Material substrate	Made from wrought brass
Certifications	Meets ANSI/BHMA A156.9, B33023

Dimensions

Plate	Strike
1 3/8" H x 5/8" W	1 3/16" H x 5/8" W

Finishes - aluminum

Ives number	A3	A5	A14	A15	A92	A716
BHMA	666		669	670	673	

